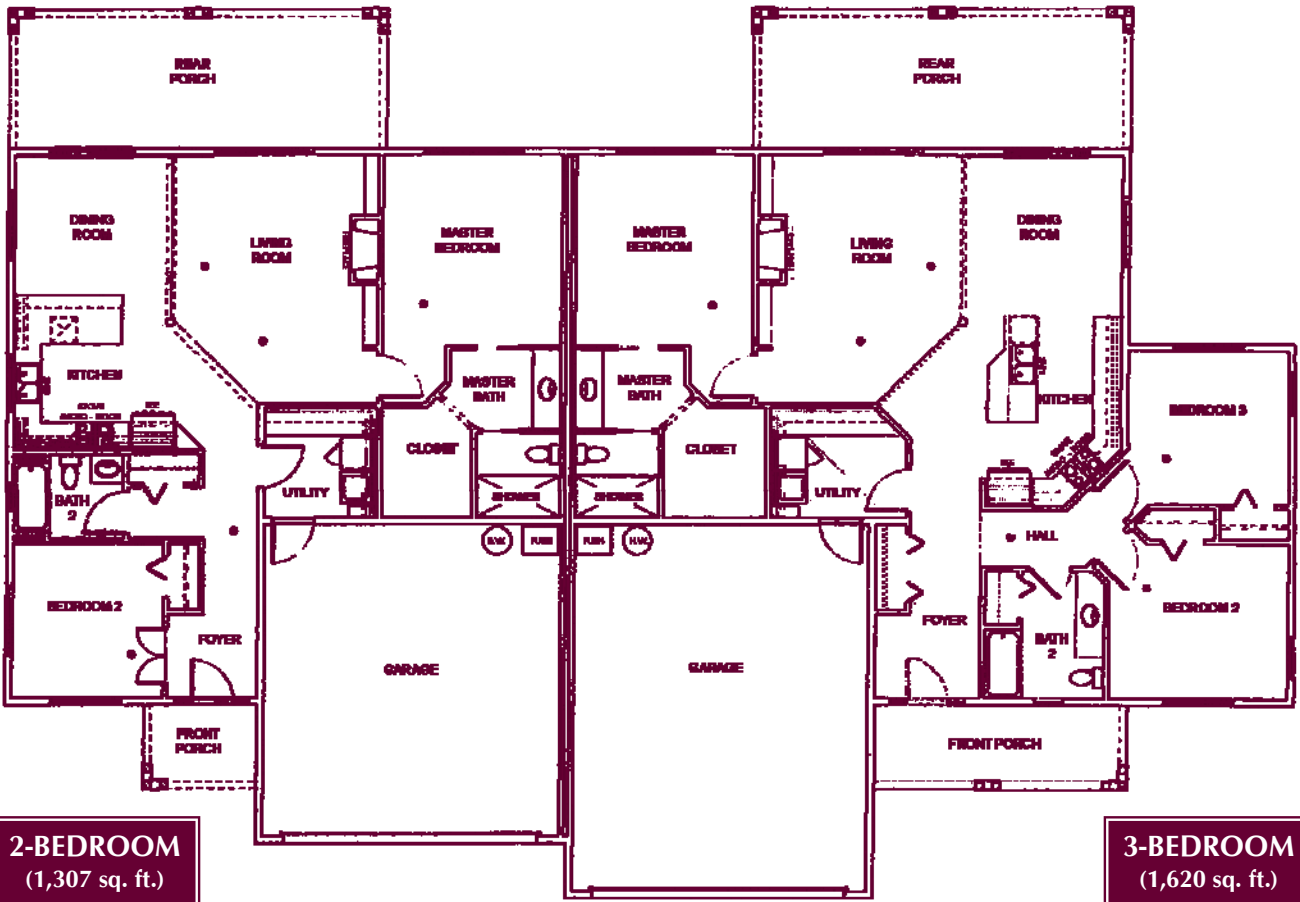




Entertain your family and friends in your brand new, single-level, custom built retirement cottage. Enjoy services that you would expect in a premier retirement community.

Imagine yourself living in one of our new, beautiful, well-crafted cottages, distinctively designed for your comfort, and conveniently located in our exclusive retirement community. Enjoy all the amenities of living at Royal Plaza including dining services, activities and entertainment just steps away.



Enjoy exclusive amenities

- 3 bedroom 2 bath—1620 sq. ft. \$3,100/mo.*
- 2 bedroom 2 bath—1307 sq. ft. \$2,900/mo.*
- Independent retirement living
- No buy in fees or long-term leases
- Month to month rental
- ADA Compliant
- Small pets welcome
- Attached 2 car garage
- Full kitchens
- Gas fireplace
- Covered porch
- Cathedral ceilings
- Washer/dryer

Also included

- Emergency call system
- All utilities including basic cable TV (except telephone)
- Weekly housekeeping
- Ground maintenance
- Interior and exterior maintenance
- One meal a day in our elegant dining room in the main building
- Access to our beauty salon, activities and social opportunities

*When it's time for Assisted Living,
you will be placed on our priority list for
an apartment in the main building.*

Call or stop by Royal Plaza to reserve your new retirement home!

*Prices effective November 1, 2007, and may be subject to change
Second person \$350/mo. additional

Introducing ~ *The Cottages* ~



at Royal Plaza
Retirement & Care Center

*Start Living
at
Royal Plaza*



Royal Plaza
Retirement & Care Center

2870 Juniper Drive ~ Lewiston, Idaho 83501

Office: (208) 746-2800

www.royalplazalewiston.com